



Our Case Studies

With challenges, development and results





CASE STUDY

climateXchange
Scotland's centre of expertise connecting
climate change research and policy



Sustainable Travel to Local High Streets/Town Centres

THE CHALLENGE

- ▶ Identify business / local economic benefits coming from more local living
- ▶ Create evidence base of benefits of sustainable travel to local high streets/town centres

THE DEVELOPMENT

- ▶ Research including literature review, stakeholder interviews and case studies
- ▶ Additionally, suite of engagement materials for use with communities, businesses and local representatives on plans to implement sustainable travel measures

THE RESULTS

- ▶ Sustainable travel can result in multiple positive benefits for high streets including:
 - ▶ Better environment / healthier, happier, safer communities / valued places that people enjoy
 - ▶ Thriving businesses, better links to jobs and increased spending



CASE STUDY

Local E-Motion

THE CHALLENGE

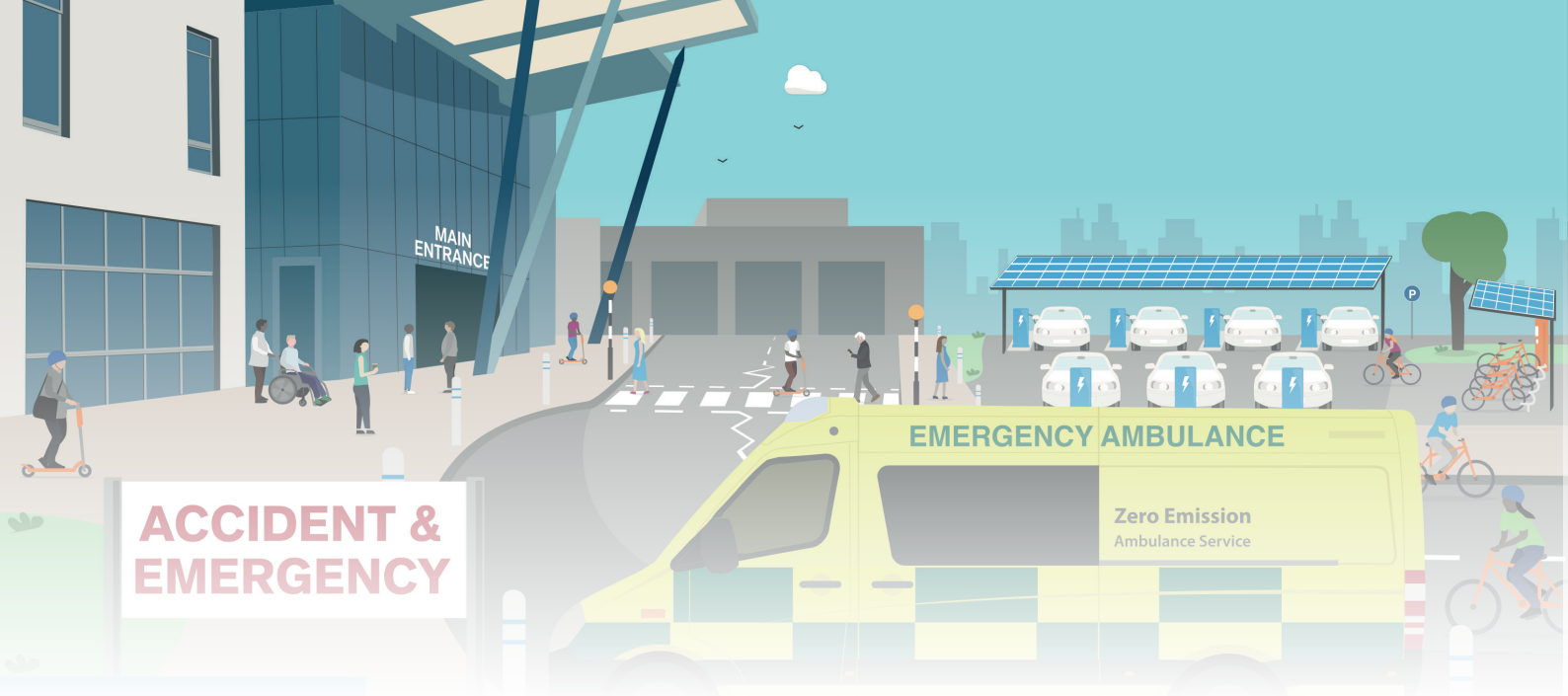
- ▶ Part of a programme to deliver a carbon-negative energy system in North Yorkshire
- ▶ Working with local communities to explore opportunities for local e-mobility hub-based schemes for rural communities wanting to make affordable low carbon transport choices

THE DEVELOPMENT

- ▶ Research, community engagement and business case for pilot schemes to deliver affordable personal electric transport choices in two areas of North Yorkshire
- ▶ Co-design virtual and/or physical hub-based personal e-mobility solutions

THE RESULTS

- ▶ Suite of reports / bid-ready business cases for locally appropriate personal e-mobility scheme(s) - either commercially viable or submitted as bid to the Shared Prosperity Fund and/or any other suitable grant funding programme



CASE STUDY

Modal Shift



THE CHALLENGE

- Review and analyse options to reduce emissions from staff commuting and business travel to and from hospital trusts

THE DEVELOPMENT

- Travel Options Review / Measure Travel Behaviour / Case Studies & Best Practice
- Interventions, Policies and Measures / Staff & Stakeholder Engagement
- Assess Potential Interventions / Recommendations

THE RESULTS

- Bespoke model for trusts to plan and implement a modal shift strategy, analysing journeys which could be completed by bike and e-bike, and monetising direct and social costs and benefits of this shift



CASE STUDY

Battery Electric Truck Trial

THE CHALLENGE

- Innovate UK funded trial, supporting DAF in deployment of 20, 19t BE Trucks across Public Sector fleets

THE DEVELOPMENT

- Independent trial monitoring, reporting and development of web-based tools
- Understanding user/driver attitudes / support fleet managers in deployment
- Driver surveys / Fleet Manager engagement / driver training research / behavioural analysis to support efficient driving styles

THE RESULTS

- Trial dashboard / web-based fleet planning tool / guidance documents / research studies
- www.bett.co.uk



CASE STUDY



Car Club Research

THE CHALLENGE

- ▶ CoMoUK represent the interests and development of shared mobility across the UK
- ▶ Undertook annual survey of car club operators and members, to provide data on

THE DEVELOPMENT

- ▶ Consumer surveys / Collection of Car Club Vehicle Data
- ▶ In-depth behavioural research into modal shift and barriers to car club use

THE RESULTS

- ▶ Large scale members survey (c10k responses) / fleet analysis and qualitative interviews
- ▶ Production of four parallel reports



CASE STUDY

Inclusive and Electric Last Mile Connectivity Study - Rwanda

THE CHALLENGE

- ▶ Supporting Government of Rwanda and the City of Kigali initiatives on development of electric mobility in the country
- ▶ World Bank study for provision of technical support in Electric Last Mile Connectivity

THE DEVELOPMENT

- ▶ Supported collection and analysis of survey data and focus groups with residents of Kigali, industry and government stakeholders
- ▶ Guidance and expertise on gender and social exclusion in transport.

THE RESULTS

- ▶ Potentially better air quality / improved connectivity / reduced TCO
- ▶ Post report – continued roll out of e-motos and e-bike sharing schemes by city of Kigali